

# CERTIFICATE OF LOCATION OF GOVERNMENT CORNER

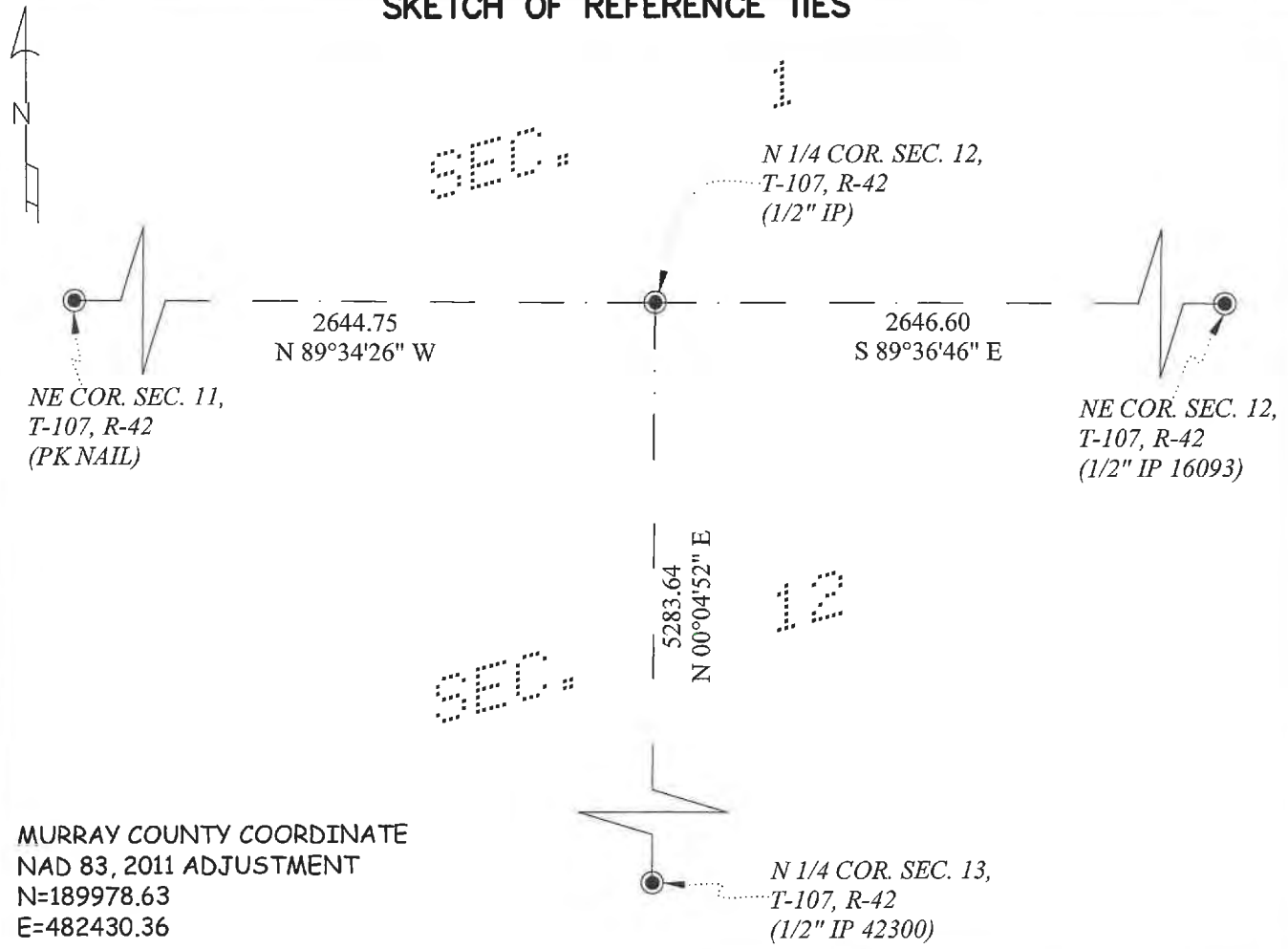
NORTH QUARTER Corner of Section 12, Township 107, Range 42, 5TH P.M.

STATE OF MINNESOTA, County of MURRAY

At the corner location shown on the sketch:

- On 7-21-2021 found a 1/2" Iron Pipe  
Date
- left monument as found,     lowered monument,     removed monument (explain)
- On \_\_\_\_\_ placed a \_\_\_\_\_  
Date

## SKETCH OF REFERENCE TIES



Statement of evidence relative to this corner location is on back of page.

I hereby certify that this document and the data contained herein was prepared by me or under my direct supervision.

[Signature]      08-12-2021  
Signature      Date

Registration No. 42300

- Land Surveyor     Professional Engineer
- County Surveyor     County Engineer

### OFFICE OF THE COUNTY RECORDER

County of MURRAY

I hereby certify that this document was filed in the County Recorders office at \_\_\_\_\_ o'clock \_\_\_\_ M. on the AUG 16 day of 2021, 20\_\_

County Recorder [Signature]

Documnet Number \_\_\_\_\_

**Statement of Evidence:**

**North Quarter Corner of Section 12, Township 107, Range 42, Murray County, Minnesota.**

September 1861- The original government survey was performed by L.G.M. Fletcher. A distance of 40.22 chains is shown to the Northeast corner of Section 12 and an over all distance of 80.45 chains is shown for the North line of Section 12.

July 21, 2021 - O'Malley & Kron Land Surveyors, Inc. performed a survey in Section 12. The Murray County Survey website was searched for information on the location of the corner and non was found. The approximate area of the corner was searched and  $\frac{1}{2}$ " iron pipe was found at the intersection of fields. The iron pipe was accepted as marking the corner and new ties were made.